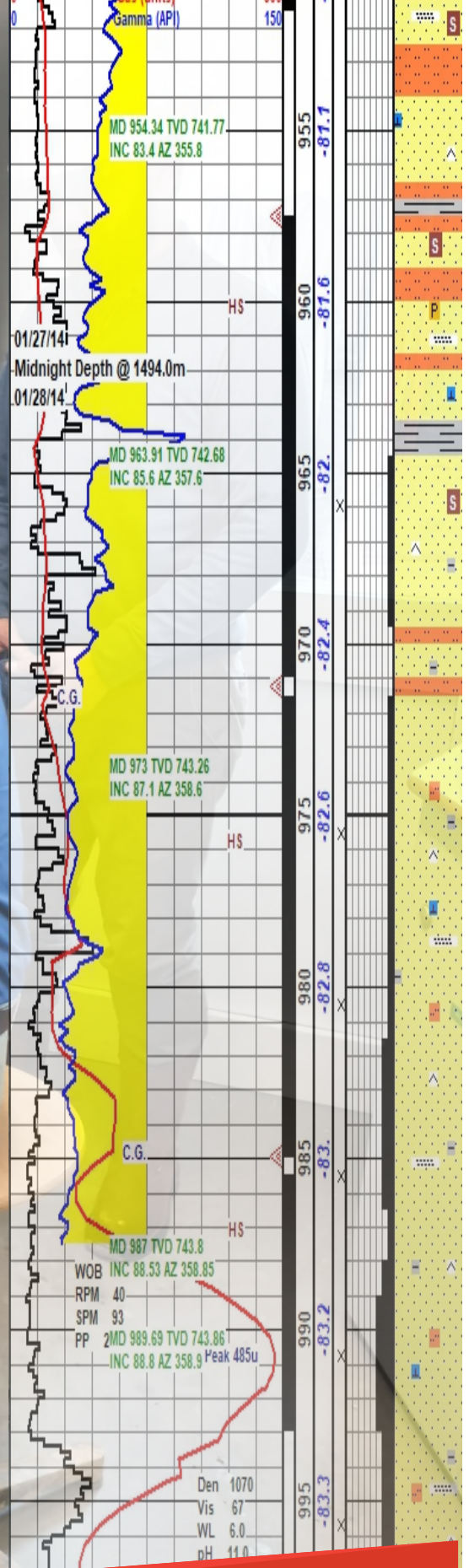




Mari Services Division



Mud Logging Unit



Mari Services Division

Mud Logging Services

- Mud Logging is an important part of the drilling activity due to its continuous monitoring from the start of the well to the very end and assists in execution of safe and secure drilling operations
- Mari Mud Logging Unit is certified for DNV 2.7-1 (Det Norske Veritas).
- Magnetoscopic Test MPI 100 all structural weld joints.
- Certified for CSC (Container Safety Convention)
- The unit lies under class A – 60 and approved to sustain average temperature of 140 degrees above the original temperature for 60 minutes and is also certified for STANAG 3542 Edition 5

Technical Information & Datasheet

HARDWARE CONFIGURATION OF MLU:

Advanced Mud Logging Unit – 25 feet

- DNV 2.7-1 (A60) Pressurized ML Unit 25 feet -Slings
- Air Conditioned (Total Capacity 48,000 BTU/hour)
- Signal/Data Acquisition system (Hardware) equipped with N.2 UPS
- Signal/Data Acquisition system

Software Equipment and Sensors

- Integrated Barrier System (IBS)
- Emergency Alarms System and Schematic
- Acquisition System
- Total Gas Detector (TGD)
- Dual FID Gas Chromatograph

Software Configuration

- **SAERT (System of Acquisition and Elaboration in Real Time) Architecture:**
- It is the integration of CompacRio for analog and digital slots with faster real time data treatment and more acquisition channel system with large amount of smart sensors in a single segment. Saert Virtual Machine consists of the following database programs.
- LGIMAS
- CATALOG
- GeoDesk
- GWM (Geolog Well Manager)
- Log Viewer
- DDE (Depth Data Editor)
- Virtual Printer
- GSR (Geolog Snap Recovery)
- Geolog Server.