

## Improving real time performance and reducing costs

Mari Mud Logging Unit monitors drilling activities from spud till completion with critical mud logging data to enhance the drilling efficiency, becoming a hub for monitoring formation responses to the drilling process. The Mud Logging unit is certified for DNV 2.7-1 (Det Norske Veritas)

### Hardware Configuration

#### Advanced Mud Logging Unit – 25 feet

- DNV 2.7-1 (A60) Pressurized ML Unit 25 feet -Slings
- Signal/Data Acquisition system (Hardware) equipped with N.2 UPS
- Signal/Data Acquisition system

#### Software Equipment and Sensors

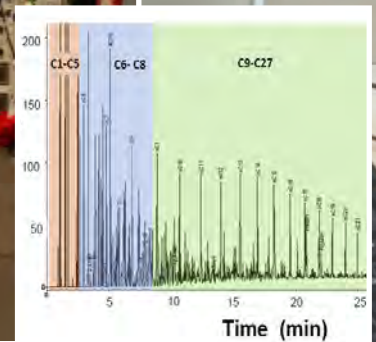
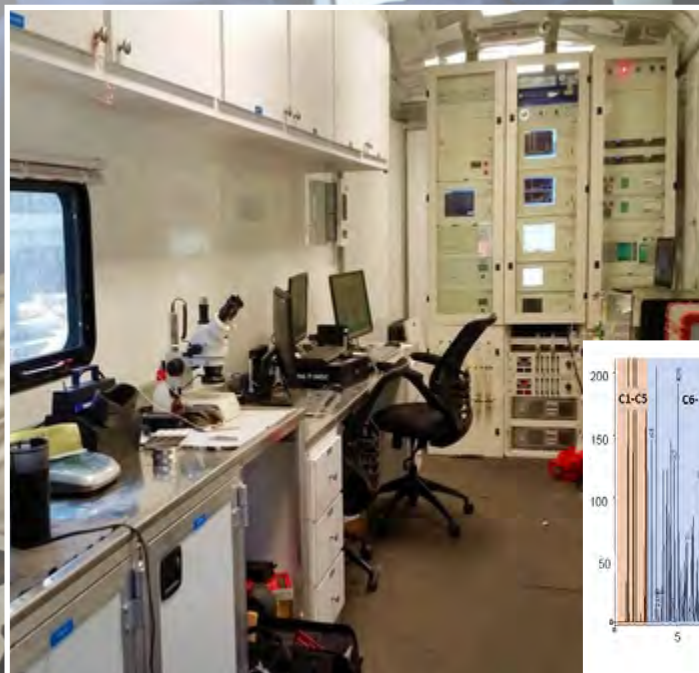
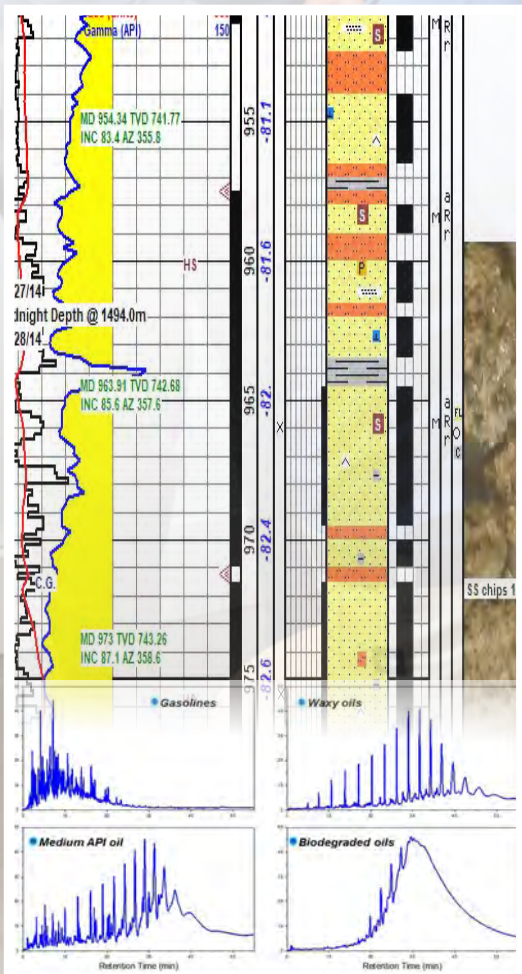
- Integrated Barrier System (IBS)
- Emergency Alarms System and Schematic
- Acquisition System
- Total Gas Detector (TGD)
- Dual FID Gas Chromatograph

### Software Configuration

#### SAERT (System of Acquisition and Elaboration in Real Time) Architecture:

Integration of CompacRio for analog and digital slots with faster real time data treatment and more acquisition channel system with large amount of smart sensors in a single segment. Saert Virtual Machine consists of the following database programs.

- LGIMAS
- CATALOG
- GeoDesk
- GWM (Geolog Well Manager)
- Log Viewer
- DDE (Depth Data Editor)
- Virtual Printer
- GSR (Geolog Snap Recovery)
- Geolog Server



Connect with our Business Development Team

